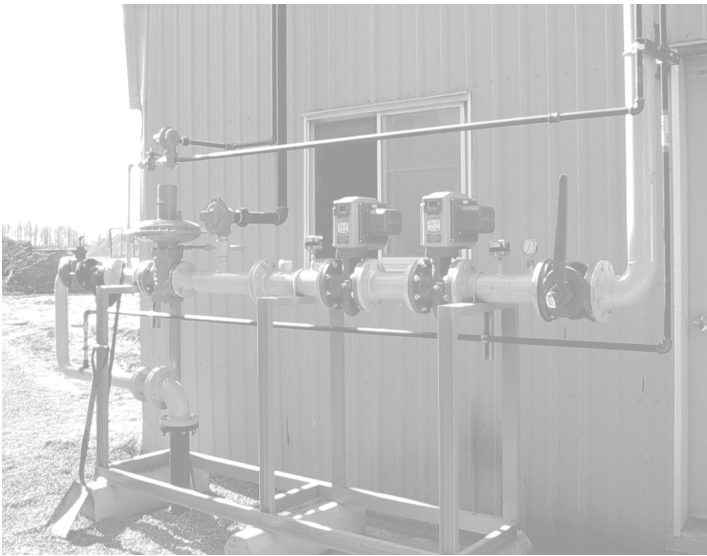




# Gas Essentials<sup>INC</sup>

Natural and Propane Gas Regulation, Measurement and Controls



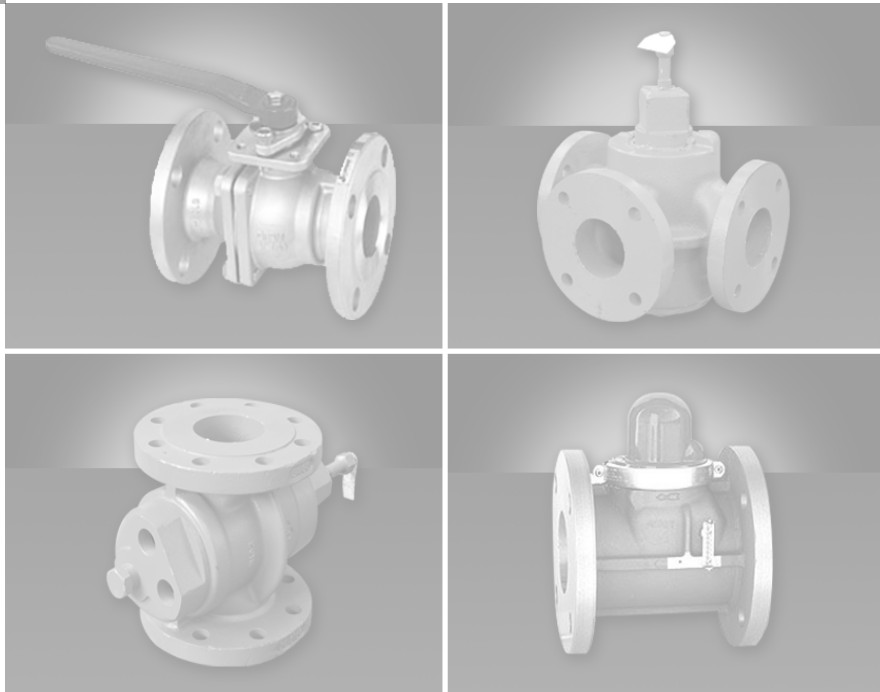
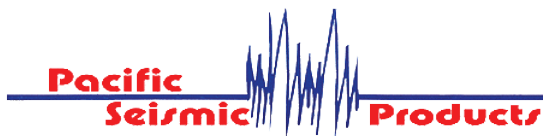
## Milliken Plug Valves

## Gas Valves Plug, Ball and Seismic

Master Distributor for



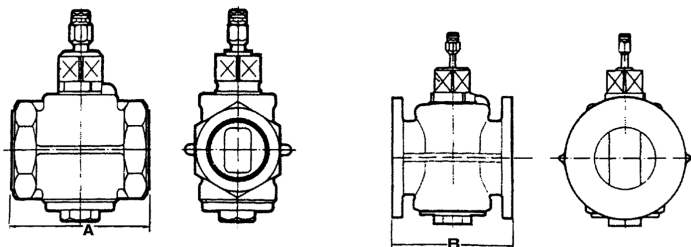
**MILLIKEN**



[www.gasesentials.com](http://www.gasesentials.com)

# Milliken Plug Valves

## Cast Iron Rectangular Port / Reduced Bore



### 170M / 171M ▼ 1 1/2" - 6" Wrench Operated

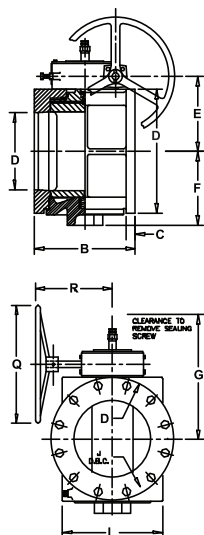
Nominal Size		in mm	1 1/2 40	2 50	2 1/2 65	3 80	4 100	5 125	6 150
170M End-to-End (Screwed)	A	in mm	4.38 111	6 152	6.50 165	7.38 187	8.88 225	-	-
171M Face-to-Face (Flanged)	B	in mm	4.63 118	7 178	7.50 190	8 203	9 225	10 254	10.50 267
Diameter of Sealing Compound Stick		in mm	.38 9.5	.38 9.5	.50 13	.50 13	.63 16	.63 16	.63 16
Wrench (Screwed valves)			J	J	L	L	O	-	-
Wrench (Flanged valves)			J	J	L	L	O	P	P
Approximate Weight (Screwed)		lb kg	5.3 2.4	9.5 4.3	15 6.6	22 10	46 21	-	-
Approximate Weight (Flanged)		lb kg	11 5	18 8.20	24 11	37 17	53 24	97 44	126 57

### Specification

- Screwed end valves are supplied to ANSI B1.20.1.
- Flanged valves are supplied with flanges to ANSI B16.1, Class 125.
- Flanged valves face dimensions are in accordance with ANSI B16.10, short pattern
- 170M/171M - 200M/201M are CSA/CGA 3.11 Approved (1/2" - 8")

The principle of the Milliken plug valve is as simple as its design. The plug, which is the only moving part of the valve, when open, presents a straight through passage in line with the pipeline, and when turned through 90 degrees to the closed position stops the flow.

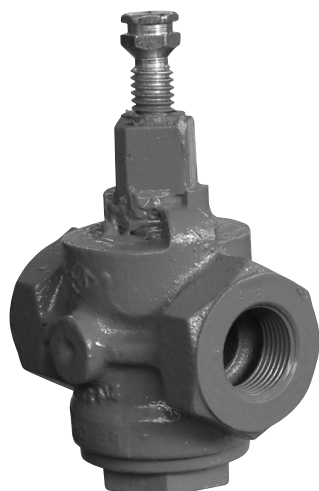
A special sealing lubricant is used to effect a completely leak tight seal. When pressure is applied to the valve in the closed position, the parallel plug is forced to the downstream side of the valve. The metal to metal contact of plug and body together with the barrier of sealing lubricant ensures a completely leak tight valve, with the sealant also acting as a lubricant and providing a barrier to reduce corrosion to the plug and body.



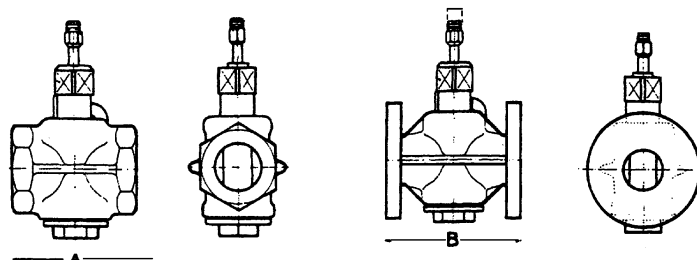
### 171MG ▼ 6" - 12" Gear Operated

Nominal Size		in mm	6 150	8 200	10 250	12 300
171MG Face-to-Face (Flanged)	B	in mm	10.5 266	11.5 292	13 330	14 356
End CRS to Gear	E	in mm	8.39 213	9.50 241	11.94 303	13.69 348
Top CRS to Gear	R	in mm	10 254	10 254	10 254	10 254
Body Diameter	L	in mm	10.0 254	11.3 287	14 356	17 432
Gear / Wheel Size	Q	in mm	12 305	12 305	12 305	12 305
Approximate Weight		lb kg	157 70	210 95	359 163	493 224

# Milliken Plug Valves



## Cast Iron Rectangular Port / Full Bore



### ▼ 200M/201M

1/2" - 4"

#### Wrench Operated

Nominal Size		in mm	1/2 15	3/4 20	1 25	1 1/4 32	1 1/2 40	2 50	2 1/2 65	3 80	4 100
200M End-to-End (Screwed)	A	in mm	3.19 81	3.5 88	4.19 106	4.38 111	4.63 117	6 152	6.5 165	7.38 187	
201M Face-to-Face (Flanged)	B	in mm	- -	- -	- -	- -	- -	7 178	7.5 190	8 203	9 229
Diameter of Sealing Compound Stick		in mm	.38 9.5	.38 9.5	.38 9.5	.38 9.5	.38 9.5	.5 13	.5 13	.63 16	.63 16
Wrench			G	G	G	J	J	L	L	O	P
Approximate Weight (Screwed)		lb kg	1.8 .8	2.6 1.2	4.6 2.1	5.7 2.6	6.8 3.1	13 6	19 8.8	31 14	-
Approximate Weight (Flanged)		lb kg	- -	- -	- -	- -	- -	22 10	29 13	42 19	84 38

### Gearing

The Milliken plug valves are available with gear operator options. In this catalogue, we have indicated in the dimensions tables, which valves are fitted with gear operators.

### Routine Maintenance

The only maintenance required on plug valves is periodic re-lubrication with valve sealant. Frequency of lubrication should be established for each specific service since requirements will vary widely with temperature, pressure, service fluid and frequency of operation.

### Lubricant / Sealant Options

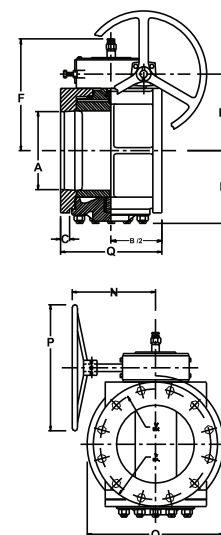
A wide variety of lubricants are available for many different service applications such as oil, asphalt and gases. Most lubricants are available in stick and cartridge form. An economical alternative to removing a valve from the line or disassembling and cleaning, valve cleaner is available to dissolve hardened debris within the sealant system.

### ▼ 201MG

6" - 8"

#### Gear Operated

Nominal Size		in mm	6 150	8 200
201MG Face-to-Face (Flanged)	B	in mm	10.5 267	11.5 292
End CRS to Gear	M	in mm	8.13 206	10.44 265
Top CRS to Gear	N	in mm	10 254	10 254
Gear / Wheel Size	P	in mm	12 305	12 305
Body Diameter	Q	in mm	11.5 292	14 356
Approximate Weight		lb kg	209 95	367 167



# Comparison Chart

## Cast Iron – Lubricated Plug Valve

Milliken	Homestead	Resun	Nordstrom	Neo Valves
170M	611	R-1430	142	
171M	612	R-1431	143	1-AS 40114
171MG	612-G	R-1431-WGA	149	1-AS 40114-C
200M	601	D-125	114	1-AR 40034
201M	602	D-126	115	
201MG	602-G	D-126-WGA	189	
200MSJ	601-SJ	D-125-SJ		
201MSJ	602-SJ	D-126-SJ	2815 / 2865	
200L	603	D-951	3402	
301L	604	D-952	3403 / 3465	
301LSJ	604-SJ	D-952-SJ		
301LG	604-G	D-952-WGA	3469	
200T	605	D-953	3412	
301T	606	D-954	3413 / 3475	
200LSJ	603-SJ	D-951-SJ		
200TSJ	605-SJ	D-953-SJ		
301TSJ	606-SJ	D-954-SJ	3479	
301TG	606-G	D-954-WGA		

\* The above chart is meant as a general cross-reference only. For specific comparisons with reference to face-to-face, pressure and flow capacity contact Norgas Controls Inc.

Other products available from



.....

**Regulators for Natural & Propane Gas  
High Pressure Regulators up to 5000 PSI  
Filter Regulators & Gauges**

## **METERS**

.....

**Diaphragm, Rotary, Turbine,  
Dattus and Accessories**

Manufacturer standard warranty applies. For a copy please contact us.